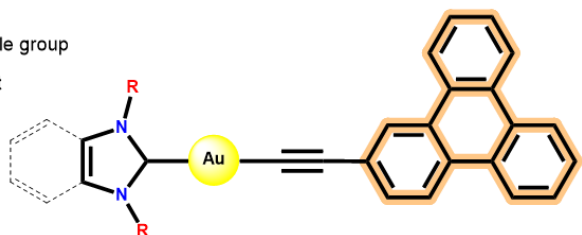


## Incorporation of Triphenylene NHC Gold(I) Complexes in micelles

### Triphenylene NHC Gold(I) Complexes

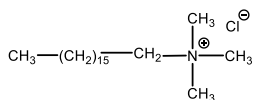
1: Imidazole group

R  
 { a: Met  
 b: Et  
 c: Bu

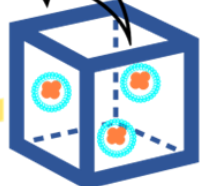
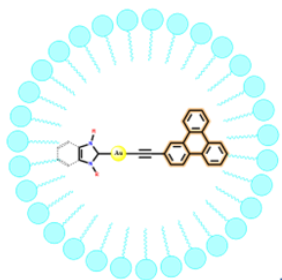
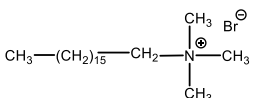


Surfactants

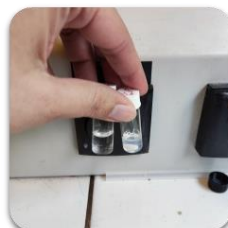
CTACl



CTABr

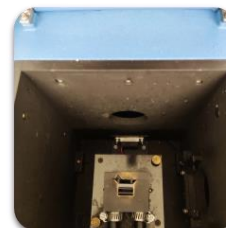


**Outcome:** incorporation in the micelles does not modify the absorption but increases phosphorescence emission at RT.



#### Incorporation in micelles

- Screening of surfactants
- Optimization of incorporation



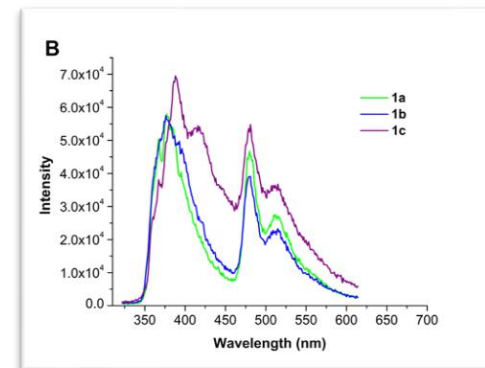
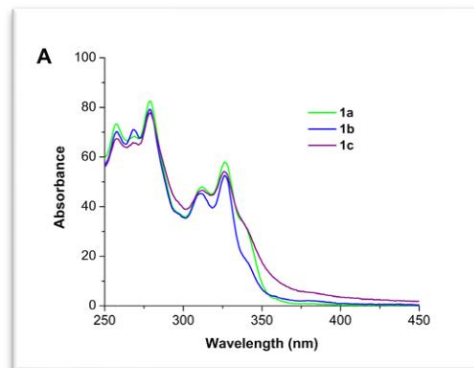
#### Setting up of the experiments

- Choice of experimental conditions: pathlength, excitation wavelength and slit



#### Measurements

- Different complexes at different concentrations: reproducibility and stability studies



A) Absorption spectra B) Emission spectra ( $\lambda_{exc}$  : 330 nm) of three different complexes (1mM) in CTACl micelles at RT.